



IWI Charity Activity

Selection Process, Grantee
Proposals and
Recommendations

June 2015

-Kristina Wilfore

Context

- Charity coordinator
- First
- Second
- Third
- Future



since May 2014
to listen and learn
to create organizational
structure
to analyze membership
interests
**create tighter connections
to the groups and more
interaction with members**



Previous Charities

selected in 2014

Year in Review

IWI Charities

- **YORET VAKFI**
An education program for counselors for children learning conflict resolution tools
- **MAVI KALEM**
Women's rights and welfare of women/children
- **BOMONTI HOME FOR THE AGED**
Elder care
- **IZEV**
Education for down syndrome adults
- **EUROPA DONNA**
Breast cancer advocacy

IWI successfully raised a combined total of TL74,895 from two main charity events in the 2013-2014 season, the Christmas Festival and Spring Ball. TL35,000 was distributed to five charities

SUPPORT TO

Europa Donna

Breast cancer



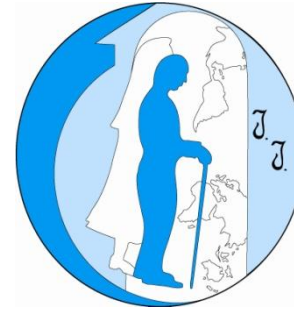
IWI support enabled Europa Donna to visit 10 universities in Anatolia to discuss ways of reaching more women for breast cancer awareness in Turkey.

- *'IWI support for Europa Donna Turkey enabled the ED local team to create breast cancer awareness through giving seminars in the selected high schools for the students to take care of their mother's breast health for an early diagnosis for their lives to be saved. ED Turkey forwards thanks to IWI and wishes to continue our common goal on women's health and BC awareness!!!' Through giving seminars in the selected high schools for the students to take care of their mother's breast health for an early diagnosis for their lives to be saved. ED Turkey forwards thanks to IWI and wishes to continue our common goal on women's health and BC awareness!!!'*

SUPPORT TO

Bomonti House

Elder care



This Elderly Residence, located in Bomonti/Sisli is home to some sixty-six needy residents Run by the Little Sisters of the Poor, the home is undertaking a massive renovation project to upgrade their accommodations to European standards as required by the Turkish government.

“Like many good hearted people IWI has been very helpful in the past years for the renovation of the rooms of the residents, and for the maintenance of the residence home. Thank you for your help in the past and hoping that you will continue. We assure you our prayers for all those who contribute their time and making a sacrifice to help the poor.”

SUPPORT TO YÖRET

Counseling for children

“IWI has always meant a lot to YÖRET, because when we presented our children rights and advocacy projects, your organization was always there to give some support. Our projects varied from year to year. We used IWI support for training school counselors and counseling student. After the training was over, we made sure they could use the information and skills they got to help disadvantaged groups of children and their families.”



- A counseling organization which trains educators in over 600 public schools in communication skills, conflict resolution, crisis prevention and intervention.
- YÖRET Vakfı is an educational organization which trains and counsels new teachers. IWI has contributed to the SMART project, which is a summer art school for disadvantaged children.
- The SMART projects aim is for children to experience new coping and behavior skills by introducing many forms of art, such as small theatre production. In addition, the children also get to enjoy social and cultural activities they would otherwise not have the chance to experience.
- YÖRET Vakfı reaches approximately 800 children and their families. The choice of school and area is made in cooperation with the Ministry of Education. <http://www.yoret.org>

SUPPORT TO

Mavi Kalem

Social assistance for women, children, youth and disaster survivors

- Through IWI support, in art therapy with Syrian children.
- Approximately 10 children are continuing for this workshop. They have 12 different workshops in the children's program.
- Children from different backgrounds are learning the meaning of discrimination, violence and communication through art.
- More volunteers for psychological support service for children and women were asked for in 2014-2015



“Mavi Kalem advocates to improve children, women rights and voluntarism. IWI has supported Mavi Kalem's work for the last 10 years. Long-term donors are very valuable to ensure sustainability as the International Women of Istanbul, because of that IWI's support is significant for the Mavi Kalem team.”

<http://www.europadonna.org>

SUPPORT TO

IZEV

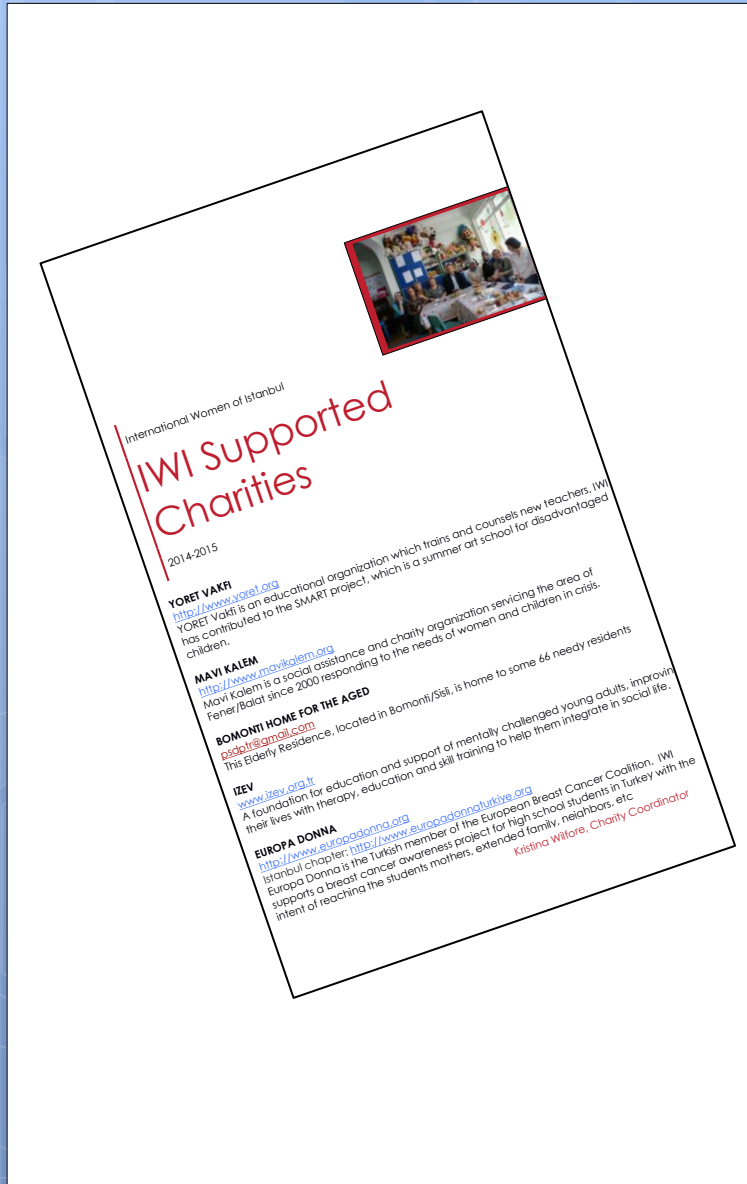
Disabled adults

A foundation for education and support of mentally challenged young adults. Improving their lives with therapy, education and skill training to help them integrate in social life. IWI funds were used on equipment upgrades in 2014.





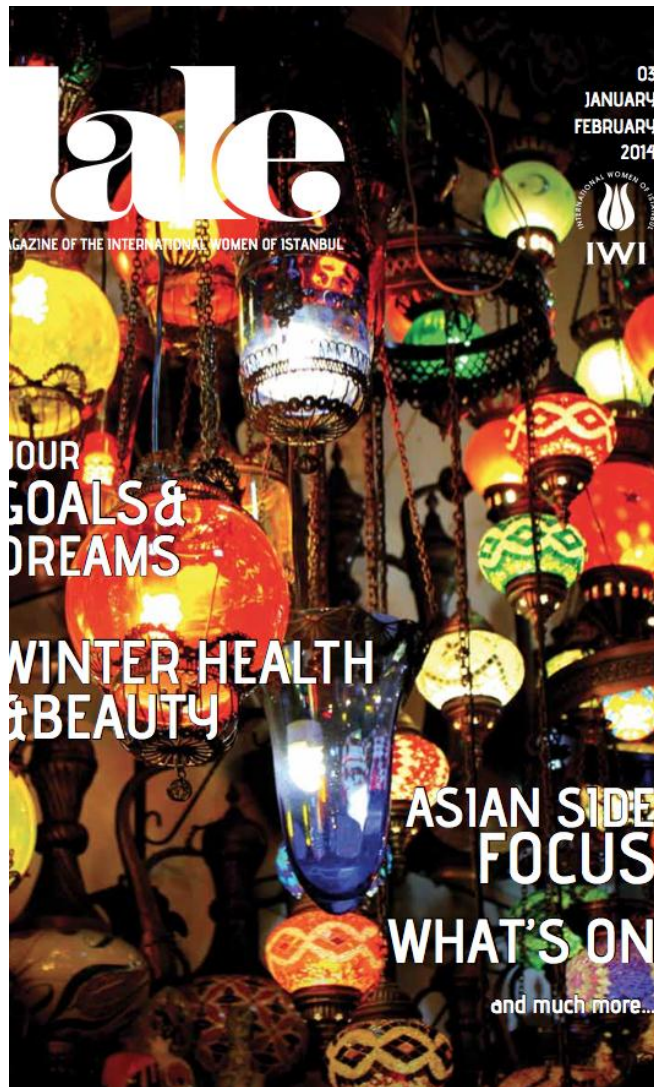
**IWI Efforts to
Promote Their
Work & Provide
Connections to
Members**



Type of interaction

- Site visits
- Help with online fundraising
- Keeping up with developments
- Connecting volunteers
- Profiling in Lale
- Updating information on the web
- IPWIN session on pro bono
- Connection with Carma
- Collection of material for Bomonti Kermes
- Coordination of participation in IWI welcome day and Christmas Bazaar





Lale articles

- Charity trends in Turkey and internationally
- Europa Donna: Breast cancer advocacy and how the program works
- Mavi Kalem: children´s rights
- Meet IWI charities, and promotion of pro bono activities
- Thanks from IWI charities
- Volunteer Profile



Background: Selection of Charities

June 2015-2016

Member survey results

Issue Priorities

- Women and children should be our priority (69%)
- Education-related organizations (45%)
- Charities working to prevent domestic violence or contribute to the needs of refugees are a second tier priority
- Third tier priorities include environmental protection, women's health, disabilities and elder care
- There is the least support for working with charities that deal with animal rights and economic development

Types of Activities Desired

- Making a **financial contribution** is the most valued activity that IWI can do for Turkish charities
- Followed by **recruiting volunteers** and helping **provide pro bono** support
- **Promoting the work of charities** and providing a booth at the IWI welcome day is important, but less so than direct contributions and volunteerism

Geographic coverage – mixed

- 50% of members surveyed who said we should do both
- Over a quarter preferred Istanbul only with 10% who would like the giving to be country-wide
- 17% of respondents did not have a preference

Type of Financial Support Preferred

- IWI can either give resources to the general operating fund of charities or focus our work on project-specific work
- The strongest support is for doing both (45%), with a slight preference (at 21%) for individual projects.

Additional considerations

- Diversity (organizations and projects)
- Band-Aid vs. cure? **We want to have a Multiplier effect!**
- Relevant to current realities in Turkey
- Organizations with a track record
- Organizations that want to work with us and are open to volunteers
- Responsive organizations
- New to IWI organizations
- Something Syria refugee-related



Summary of new applicants

- Ten organizations applied for support from IWI with very high quality projects
- Only two organizations did not apply formally for continued support (of existing IWI grantees)
- Projects cover education, women and girl´s economic empowerment, Syrian refugees projects (women and children), health care and domestic violence



Issue Breakdown

- Economic empowerment (2)
- Children´s welfare (2)
- Women´s health (breast cancer) (1)
- Women´s education (1)
- Domestic Violence (1)
- Women´s leadership (2)
- Syria (3)
 - Support to families/women/children
 - Art therapy
 - Women´s economic development



- Review taking place with internal charity committee
Vetting process underway (met with each organization to discuss proposal)
- Recommendations made at June board meeting
- Announcements made week of June 9th
- New information posted on web
- Volunteer connections made over summer
- Grantees invited to future board meeting
- Recruitment for volunteer coordinator